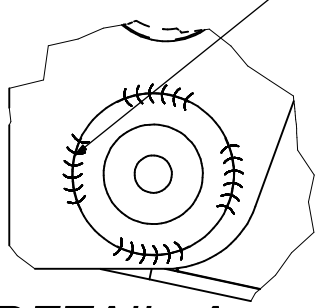


TIRE TYPE	TIRE MAX CAPACITY (LBS) @ PSI	FRAME TO GROUND "B"	TIRE TOP TO FRAME "C"	LOADED RADIUS "D"	FREE RADIUS "E"
LT 215 / 85 R16	2680 @ 80	16.2	13.3	14.2	15.3
8.75 R16.5 LT	2680 @ 80	15.6	12.5	13.6	14.5
LT 235 / 85 R16	3042 @ 80	16.4	13.5	14.4	15.5
7.50 R16	3140 @ 90	16.9	13.9	14.9	15.9
9 - 14.5 LT	3230 @ 100	15.3	12.2	13.3	14.2
215 / 75 R17.5	4805 @ 125	16.2	13.3	14.2	15.3

TIRE DIMENSIONS VARY WITH MANUFACTURER

ITEM	SIZE	TORQUE	
		(FT-LB)	(N-M)
SHOCK BOLT/NUT	3/4-10	160	217
AIR SPRING NUT	1/2-13 NC	25	34
AIR SPRING BOLT	3/8-16 NC	25	34
PIVOT NUT	3/4-16 NF	310	420

TYP. BOTH SIDES AFTER AXLE ALIGNMENT $\sqrt{.188} \sqrt{1"-4 \text{ PLCS}}$

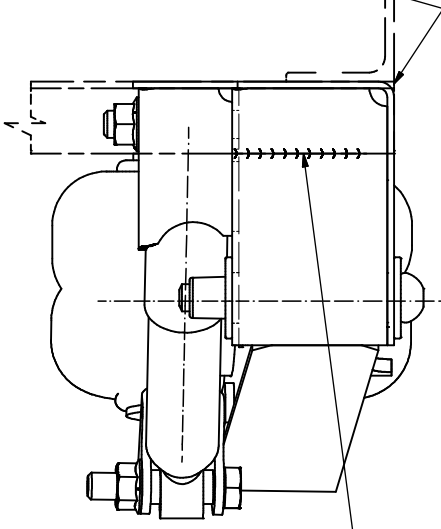


DETAIL A

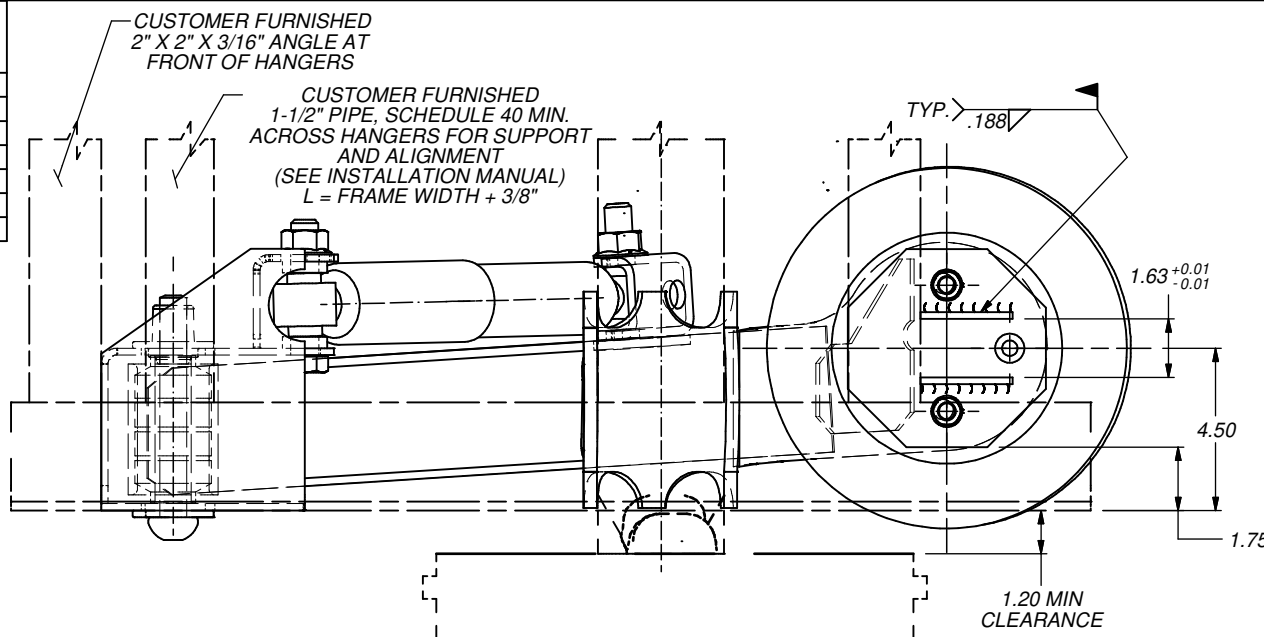
WELD HANGER TO FRAME BEFORE PLACING ANGLE STOP WELDS .25" AWAY FROM EDGES-TYP.

TYP-2 PLCS EACH HGR (OUTBOARD AND INBOARD) $\sqrt{.188}$

SET HANGER FLUSH TO OUTSIDE OF FRAME

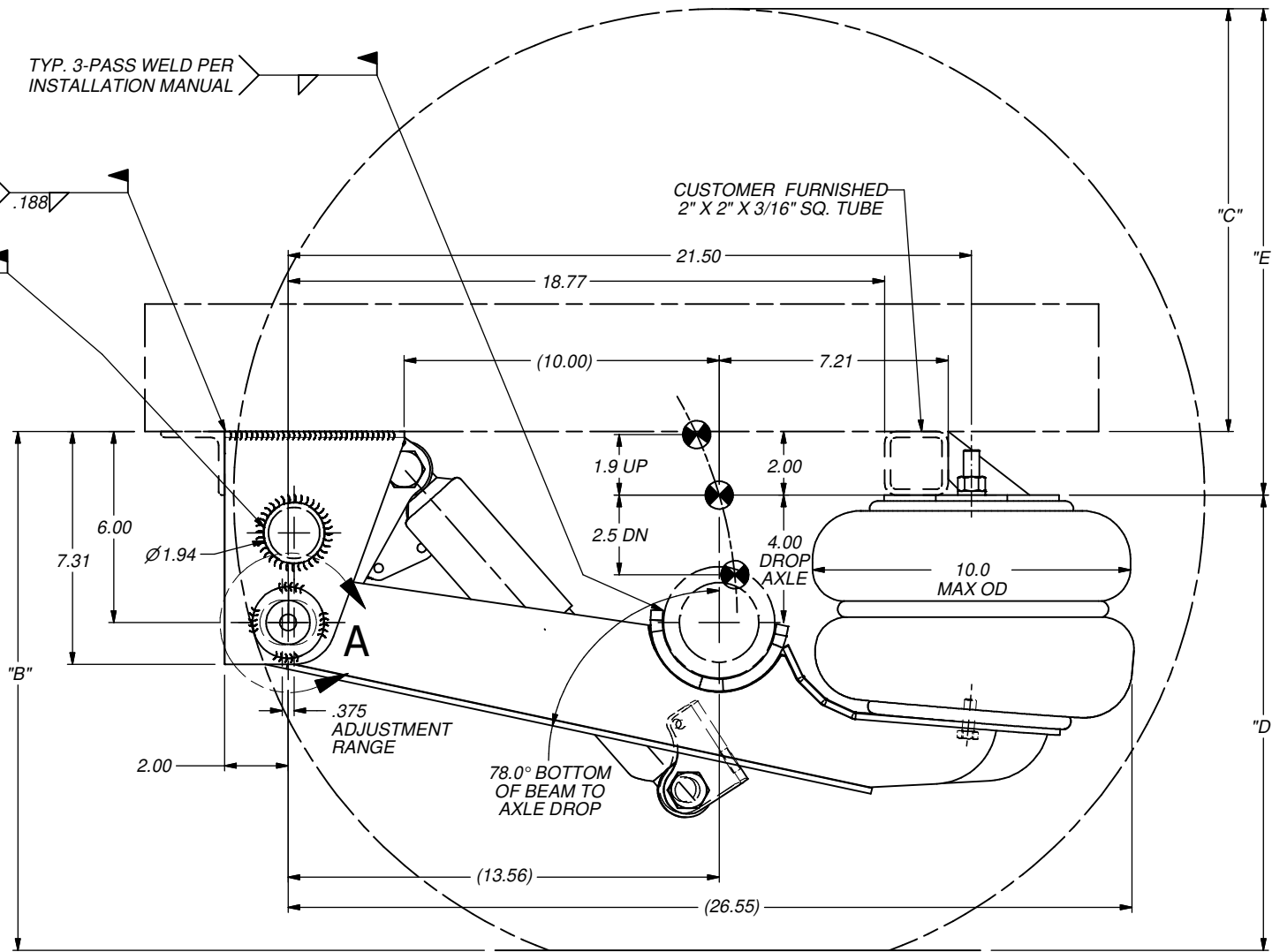


STOP WELDS .25" AWAY FROM EDGES TYP. $\sqrt{.188}$



TYP. 3-PASS WELD PER INSTALLATION MANUAL

CUSTOMER FURNISHED 2" X 2" X 3/16" SQ. TUBE



PARTS BAG (LOCATED IN CARTON) NO. 1800022

PARTS REQUIRED FOR 3010340 (RH HGR/BEAM ASSY)

PARTS REQUIRED FOR 3010339 (LH HGR/BEAM ASSY)

PARTS REQUIRED FOR 6000165 (CARTON OF PARTS)

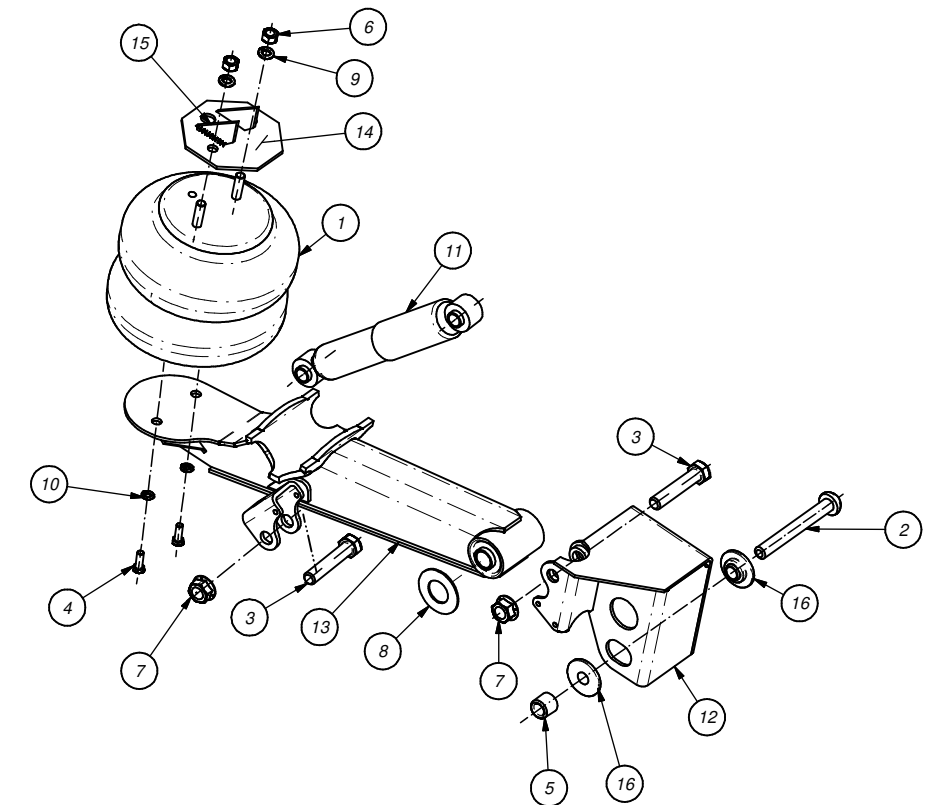
ITEM	PART NO.	DESCRIPTION	QTY	QTY	QTY	QTY
1	1003586905C	A/SPG 2B9-206	2			
2	1130011	HUCK BLT 3/4"x4.75-5" GRIP		1	1	
3	1140021	HHCS 3/4" 10NC 3.75"LG. GRD5				4
4	1140674B105	HHCS 3/8" 16NC 1"LG. GR5, ZINC PLATE				4
5	1150005	HUCK COLLAR 3/4" STANDARD		1	1	
6	1150650B102	NUT 1/2" 13NC 3/4" STANDARD, GR2, ZINC PLATE				4
7	1157711B105	L'NUT 3/4 10NC TL FL				4
8	1160005	2.75"OD WASHER .100" (UHMW) 1.4"ID		1	1	
9	1160556B100	L'WASHER 1/2" S/T MED, ZINC PLATE				4
10	1160675B100	L'WASHER 3/8" S/T MED, ZINC PLATED				4
11	1270007	SHOCK MONROE #66627	2			
12	3260052	HANGER ASSEMBLY LH		1		
	3260053	HANGER ASSEMBLY RH			1	
13	5970548	BUSH/BEAM ASSEMBLY LH		1		
	5970549	BUSH/BEAM ASSEMBLY RH			1	
14	7000347	PLATE AIR SPRING MOUNT	2			
15	7000606	AIR SPRING MTG GUSSET	4			
16	9000007	SHOULDERED WASHER		2	2	

REF BEAM ASSEMBLY:

4280055 LEFT
4280056 RIGHT

⚠ FOR PIVOT HARDWARE REPLACEMENT, ORDER KIT #6040063.

⚠ FOR BUSHING REPLACEMENT, ORDER KIT #6040087 (INCLUDES PIVOT HARDWARE).



This drawing and/or electronic media containing this drawing is the sole property of the Ridewell Corp. and is loaned with the express condition that it is not to be used in any way deleterious to the interest of the Ridewell Corp. The acceptance of this drawing and/or electronic media containing this drawing will be construed as an acceptance of the foregoing conditions. Drawings and/or electronic media containing this drawing are to be returned to the Ridewell Corp. upon request.

MAX CAPACITY = 8000 lbs



R	R229	ITEM 13 WAS 4280057/58, ADDED BEAM NOTE:	3/4/22	GWH	AAS	CJB
P	1883	ITEM 2 WAS 1140021, ITEM 3 WAS 1140050, ITEM 5 WAS 1150016	5/06/2020	GWH	AAS	CJB
N	R186	ITEM 3 DESCRIPTION WAS HUCKBOLT 3/4" X 4.75 5"	3/11/2020	GWH	AAS	CJB
M	1666	ITEM 2 WAS 1130011, 3 WAS 1140021, ITEM 5 WAS 1150005	1/2/20	GWH	AAS	CJB
L	18101	ADDED NOTES 1 & 2	1/9/18	AAS	BWH	CJB
K	14102	ADDED AXLE WELD CALL-OUT	7/30/14	BC	MDJ	CJB
REV	PROJ / ECR	DESCRIPTION	DATE	BY	CHK	APPD

DRAWN BY:	JMK	1/19/2000
CHECKED:	MDJ	1/20/2000
APPROVED:	JMK	1/19/2000
PROJECT NO:		
MATERIAL:	SEE BOM	N/A
TOLERANCES UNLESS OTHERWISE SPECIFIED:		
DECIMAL:	X ± 0.1	FRACTION: ± 1/16
	XX ± 0.06	ANG: X ± 1'
	XXX ± 0.030	XXX KCC
	* WELD TOLERANCES PER ISO WD45-02	

RIDEWELL CORPORATION
PO BOX 4586 SPRINGFIELD, MISSOURI 65808

TITLE: **RAR-244-3.5"-6RH-8K-USW**
3.5" ROUND/0.50" WALL
4" DROP AXLE

SHEET 1 OF 1
PART NO: **2440002**
REV: **R**

UNCONTROLLED IF PRINTED